



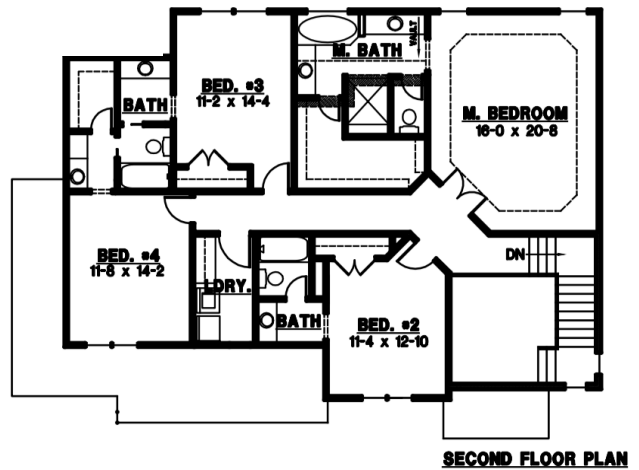
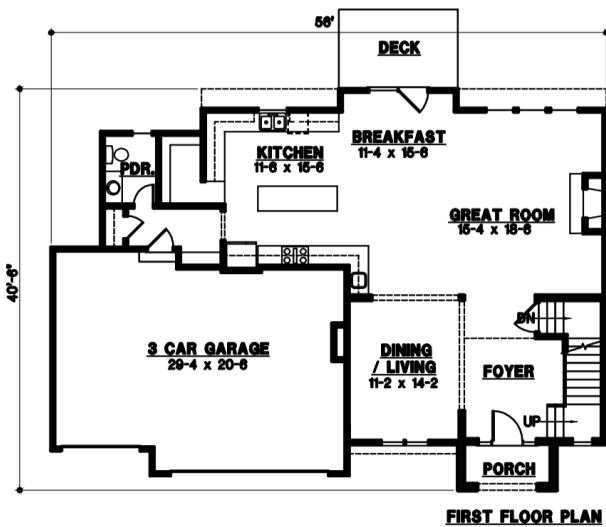
DREES BUILT HOMES

913.915.4201 dreesbuilthomes.com

DESIGNED FOR TODAY. CONSTRUCTED FOR LIFE.



The Galoway



WOODLAND MANOR

One mile south of K-10 Highway at Woodland & 107th Terrace

The Galoway

Exterior Standard Features

Covered Patio
Electrical Outlets – 2
Water spigots - 2
Basement walls – 9’
3 car garage
 pre-wired for openers
 8’ tall insulated, life time warranty garage doors
Stucco front with stone accents and LP Smart trim and siding
Low E insulated double pane Pella Windows
Roof – 50 year composite
Sod lot (up to 12,000 sq ft)
Sprinkler system
Available with walk-out or full basement

Interior Standard Features

Egress window
Plumbing stubs for ¾ bath in basement
Certified Energy Rater
Licensed structural engineer
Interior Designer
Additional beverage sink near dining room
Fireplace with direct vent
Foam and caulk seal package
Carpet – substantial carpet allowance including upgraded carpet on stairs with iron spindles
Granite countertops in Kitchen with upgraded fixtures.
Hardwood floors in Kitchen, Dining Room and entry.
Tile floors in mudroom and laundry room
Tile floors in all bathrooms.
Walk-in tiled master shower and jetted tub
Sump pump with drain tile
50 gallon hot water heater
Generous walk-in pantry off of kitchen
Vaulted ceiling in large master bedroom
Generous walk-in closet in master
Gas line for cook top

Available upgrades

Additional egress window	\$950
Additional Paint Colors room	\$200/
Extra patio space	\$9.50/sq ft
Can Light	\$95
Electrical outlets	\$90
Finished basement	\$35/sq ft
Garage door openers	\$600/door

*Actual home may vary from elevation and floor plan shown. All information deemed reliable but not guaranteed. Prices and features may change without notice.

*Trim packages are subject to change depending on the designer’s choice of finishes.



DREES
BUILT HOMES

913.915.4201 dreesbulthomes.com
DESIGNED FOR TODAY. CONSTRUCTED FOR LIFE.